

Read the Record online at
www.chelsearecord.com

Inside this Week

- Editorial/4
- Obituaries/6
- Sports/9

Published by the
Independent Newspaper
Group

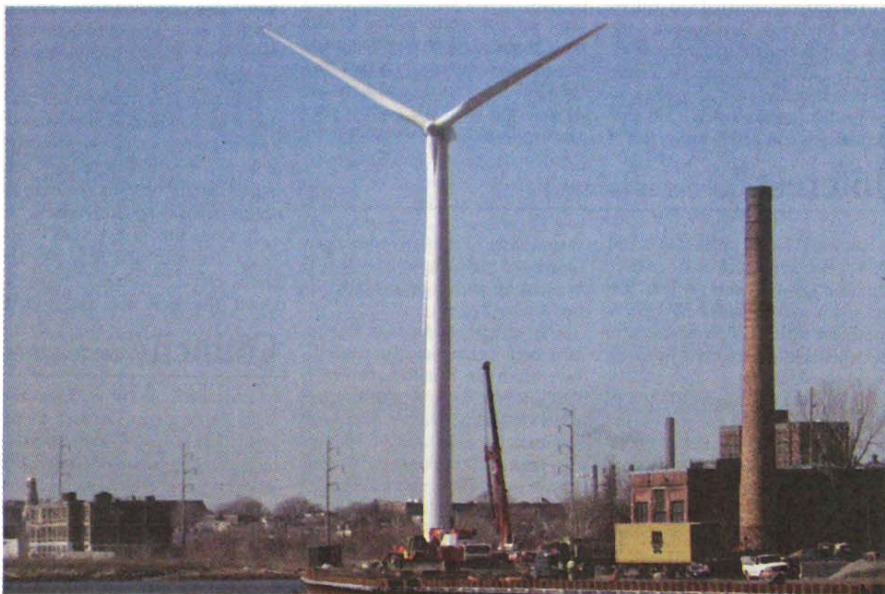


Your Hometown Newspaper Since 1890

Chelsea RECORD

VOL. 108, NO. 3

THURSDAY, March 13, 2008



The Chelsea windmill, which can be seen from numerous vantage points is 250 feet tall.

Chelsea windmill causing major interest locally

By JOSH RESNEK
editor@chelsearecord.com

The future is here, and you can see it in the form of a brilliant, white windmill on the Chelsea side of the Revere Beach Parkway when you are traveling south into Boston.

It stands 250 feet tall, with enormous propellers capable of catching enough wind and converting it to electricity in order to power more than 300 condominiums.

The future is here, and you can see it standing tall, sleek, white and impressive in Chelsea, on the sprawling property once occupied by Forbes Lithograph and now being developed by Urban Design/Development as a green, environmentally sound project.

The windmill is the type of modern modality that is likely to change the way mankind creates energy – and if oil at \$104 a barrel this week doesn't give a hint of what is to come – the

potential of the windmill certainly does.

By using the natural wind, the Chelsea windmill will produce enough energy to run virtually all the electricity needs of the first increment of about 350 condominium units currently under construction on the sprawling site.

According to Blair Galinsky of Urban Design, the windmill is a

Turbowind T-600 which has a 600 KW generator which will produce 1million kilowatt hours per year. It is equipped with an additional 125KW generator which will permit access to renewable energy even when the wind speed is lower.

"We most certainly would not be positioned to enjoy the success we anticipate without support and guidance from our lender, Massachusetts Technology Collaborative, the FAA, the city of Chelsea, NStar, IBEW, Congressman Mike Capuano and Massport," he said.

At a meeting at Chelsea City Hall Monday evening, several residents expressed their fears and spoke against the windmill, declaring it would be too noisy.

They also complained that it was too tall

"We made certain that the Windmill would not generate mechanical or aerodynamic sounds that could be a source of discomfort for our residents ... the windmill will not be a nuisance," Galinsky added.

However, notwithstanding the few complaints expressed, the new windmill has brought about enormous public interest in generating energy from the wind.

There has been some public discussion in Revere about positioning windmills in North Revere along the edge of the marsh, or out in the water, a half-mile off Revere Beach. Generally, many Revere residents have responded favorably to Chelsea's windmill, and many of them said they wished Revere had such a project.

Many more said they would be in favor of having a much smaller windmill structure on their own homes.

In Lynn, former Councillor-at-Large Loretta Cuffe O'Donnell has been a proponent of windmills for

years. Lynn - with its wide open spaces and prevailing winds - would be ideal for such a project, she has said repeatedly.

City officials there, as in Revere, have been looking into the possibilities, which are manifold. However, they haven't been so quick or so demanding as to require developers to use such energy sources, nor have they been able to incorporate such initiatives into their own public projects, such as the new police station or the two new schools in Revere.

Officials in Revere looking over these building projects have told the Journal over the years that they just weren't thinking in those terms when they designed the facilities.

Perhaps now is the time to start such a line of thinking.

However, it is in Chelsea where the first stand has been taken, and frankly, it is impressive.

"Forbes continues to push the envelope to be the cleanest and greenest residential project in the region," said Chelsea City Manager Jay Ash.

Even people passing through the area are amazed by the new structure. In taking photos for this story, we encountered two people – one from Rhode Island and one from New Hampshire – who had seen the windmill from the road, stopped and snapped their own pictures.

"That's amazing that they're doing that here already," said the man from Rhode Island. "This is what's going to help our energy problems."

And everyone, including those on the Revere side of the creek, would have to agree. Certainly, it's gotten the wheels – or should we say turbines – spinning in everyone's thoughts.

Seth Daniel contributed to this report